



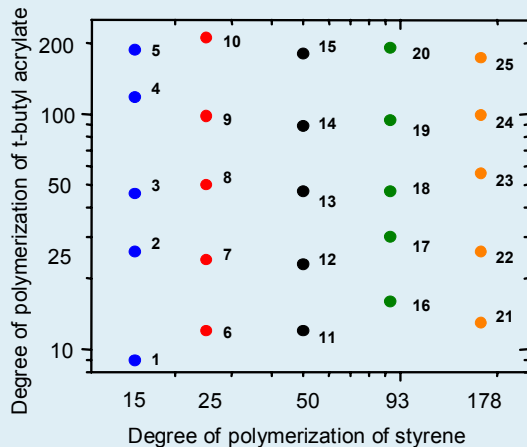
ATRP
solutions





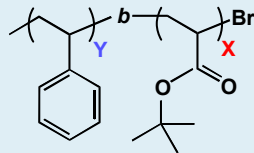
L-1213 Polystyrene-*b*-Poly(*t*-butyl acrylate) Systematic Library

SAMPLE MAP



QA/QC:

Sample Name: PSt_Y-*b*-PtBA_X



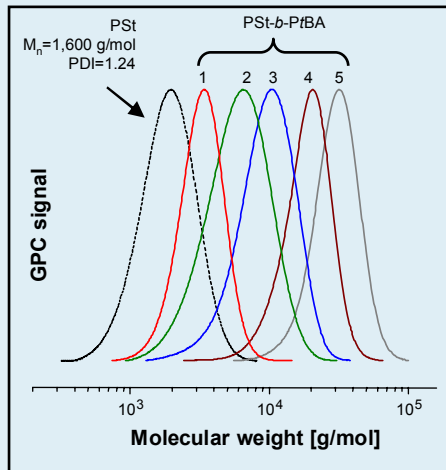
Degree of Polymerizations:

For PSt $Y = 15, 25, 50, 93, 178$ (constant for each copolymer)

For PtBA $X \approx 10, 25, 50, 100, 200$

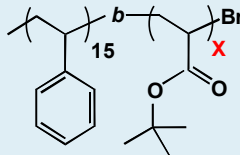
L-1213 Polystyrene-*b*-Poly(*t*-butyl acrylate) Systematic Library

SAMPLES: 1-5



QA/QC:

Sample Name: PSt₁₅-*b*-PtBA_x



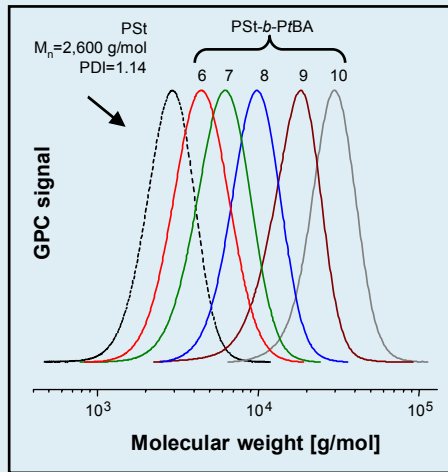
Results:

$M_{n\text{PSt}} = 1,600$ g/mol, $\text{PDI}_{\text{PSt}} = 1.24$, $\text{DP}_{\text{PSt}} = 15$ (GPC)

- | | |
|--|------------------|
| (1) $M_n = 2,800$ g/mol, PDI = 1.14, X = 9 | (LOT# 08-006-34) |
| (2) $M_n = 4,900$ g/mol, PDI = 1.27, X = 26 | (LOT# 08-006-33) |
| (3) $M_n = 7,500$ g/mol, PDI = 1.17, X = 46 | (LOT# 08-006-32) |
| (4) $M_n = 16,700$ g/mol, PDI = 1.17, X = 118 | (LOT# 08-006-31) |
| (5) $M_n = 25,600$ g/mol, PDI = 1.15, X = 187 | (LOT# 07-006-30) |

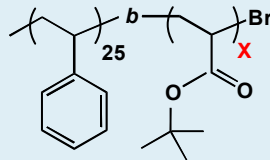
L-1213 Polystyrene-*b*-Poly(*t*-butyl acrylate) Systematic Library

SAMPLES: 6-10



QA/QC:

Sample Name: PSt₂₅-*b*-PtBA_x



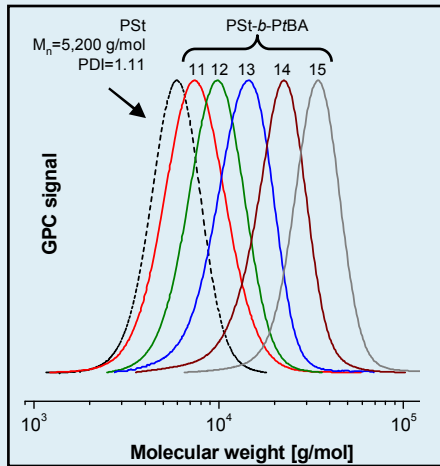
Results:

$M_{n\text{PSt}} = 2,600$ g/mol, $\text{PDI}_{\text{PSt}} = 1.14$, $\text{DP}_{\text{PSt}} = 25$ (GPC)

- | | |
|---|------------------|
| (6) $M_n = 4,100$ g/mol, PDI = 1.17, X = 12 | (LOT# 08-006-09) |
| (7) $M_n = 5,700$ g/mol, PDI = 1.16, X = 24 | (LOT# 08-006-08) |
| (8) $M_n = 9,000$ g/mol, PDI = 1.17, X = 50 | (LOT# 08-006-07) |
| (9) $M_n = 15,200$ g/mol, PDI = 1.16, X = 98 | (LOT# 08-006-06) |
| (10) $M_n = 29,600$ g/mol, PDI = 1.12, X = 211 | (LOT# 08-006-05) |

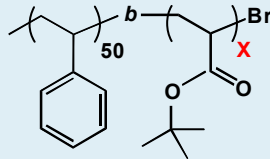
L-1213 Polystyrene-*b*-Poly(*t*-butyl acrylate) Systematic Library

SAMPLES: 11-15



QA/QC:

Sample Name: PSt₅₀-*b*-PtBA_X



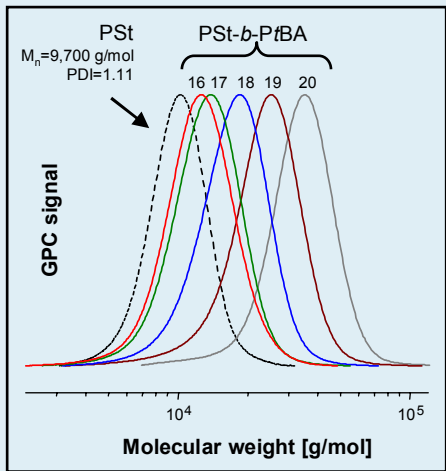
Results:

$M_{n\text{PSt}} = 5,200$ g/mol, $\text{PDI}_{\text{PSt}} = 1.11$, $\text{DP}_{\text{PSt}} = 50$ (GPC)

(11) $M_n = 6,800$ g/mol, PDI = 1.16, X = 12	(LOT# 07-004-55)
(12) $M_n = 8,100$ g/mol, PDI = 1.13, X = 23	(LOT# 07-004-53)
(13) $M_n = 11,200$ g/mol, PDI = 1.14, X = 47	(LOT# 07-004-47)
(14) $M_n = 16,600$ g/mol, PDI = 1.15, X = 89	(LOT# 07-004-52)
(15) $M_n = 28,300$ g/mol, PDI = 1.12, X = 180	(LOT# 07-004-45)

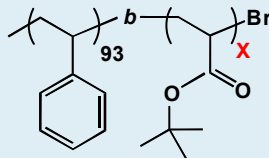
L-1213 Polystyrene-*b*-Poly(*t*-butyl acrylate) Systematic Library

SAMPLES: 16-20



QA/QC:

Sample Name: PSt₉₃-*b*-PtBA_x



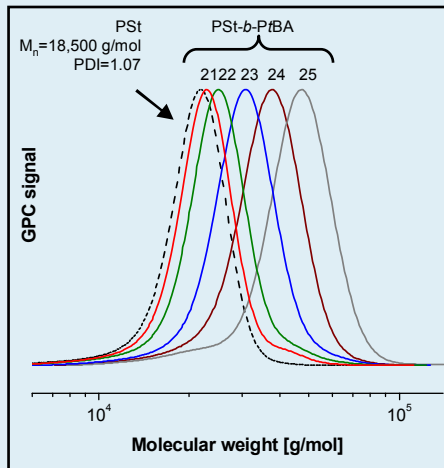
Results:

$M_{n\text{PSt}} = 9,700$ g/mol, $\text{PDI}_{\text{PSt}} = 1.11$, $\text{DP}_{\text{PSt}} = 93$ (GPC)

(16) $M_n = 11,800$ g/mol, PDI = 1.14, X = 16	(LOT# 08-006-04)
(17) $M_n = 13,500$ g/mol, PDI = 1.13, X = 30	(LOT# 08-006-03)
(18) $M_n = 15,700$ g/mol, PDI = 1.14, X = 47	(LOT# 07-004-80)
(19) $M_n = 21,700$ g/mol, PDI = 1.16, X = 94	(LOT# 07-004-79)
(20) $M_n = 34,200$ g/mol, PDI = 1.11, X = 191	(LOT# 07-004-78)

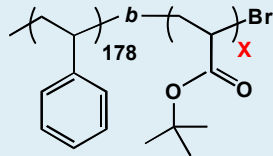
L-1213 Polystyrene-*b*-Poly(*t*-butyl acrylate) Systematic Library

SAMPLES: 21-25



QA/QC:

Sample Name: PSt₁₇₈-*b*-PtBA_x



Results:

$M_{n\text{PSt}} = 18,500$ g/mol, $\text{PDI}_{\text{PSt}} = 1.07$, $\text{DP}_{\text{PSt}} = 178$ (GPC)

(21) $M_n = 20,200$ g/mol, PDI = 1.09, X = 13	(LOT# 07-004-43)
(22) $M_n = 21,800$ g/mol, PDI = 1.11, X = 26	(LOT# 07-004-35)
(23) $M_n = 25,700$ g/mol, PDI = 1.09, X = 56	(LOT# 07-004-30)
(24) $M_n = 31,200$ g/mol, PDI = 1.09, X = 99	(LOT# 07-004-28)
(25) $M_n = 40,700$ g/mol, PDI = 1.09, X = 173	(LOT# 07-004-29)





ATRP Solutions, Inc
166 N Dithridge Suite G4
Pittsburgh, PA 15213

WEBSITE: www.atrpsolutions.com

TO ORDER CALL: 1-412-735-4799